



Slurryflo[™]
valve corp.

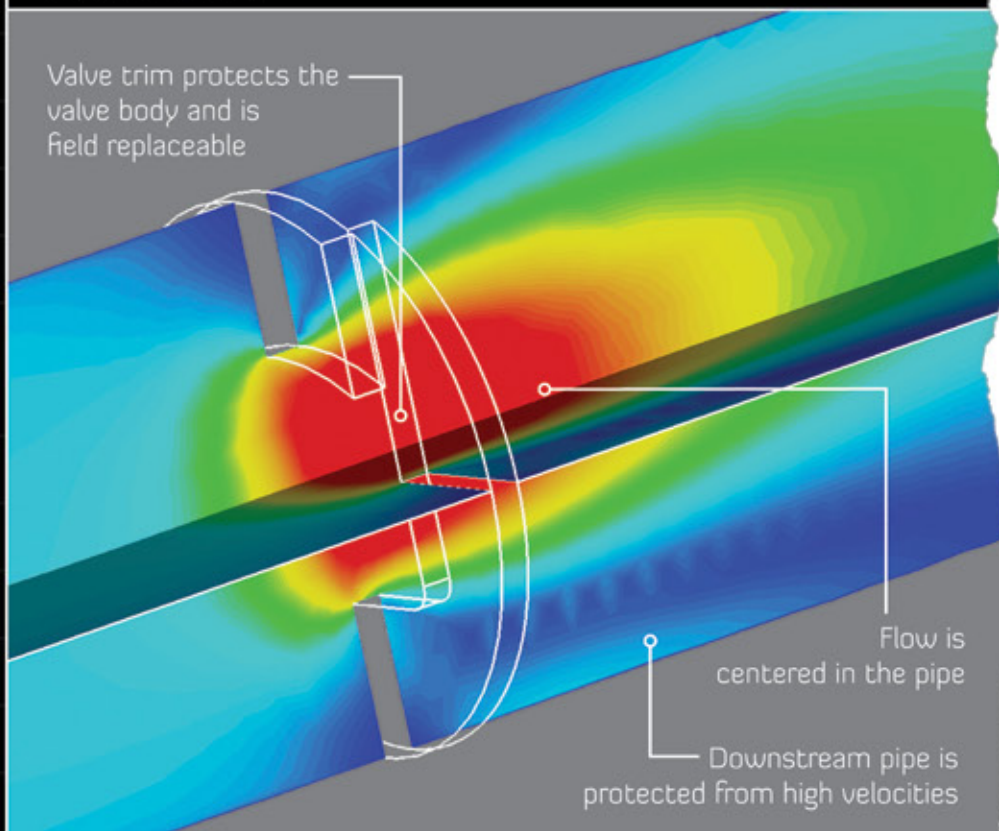
The Toughest Control Valve in the World

www.slurryflo.com

The Toughest Control Valve in the World

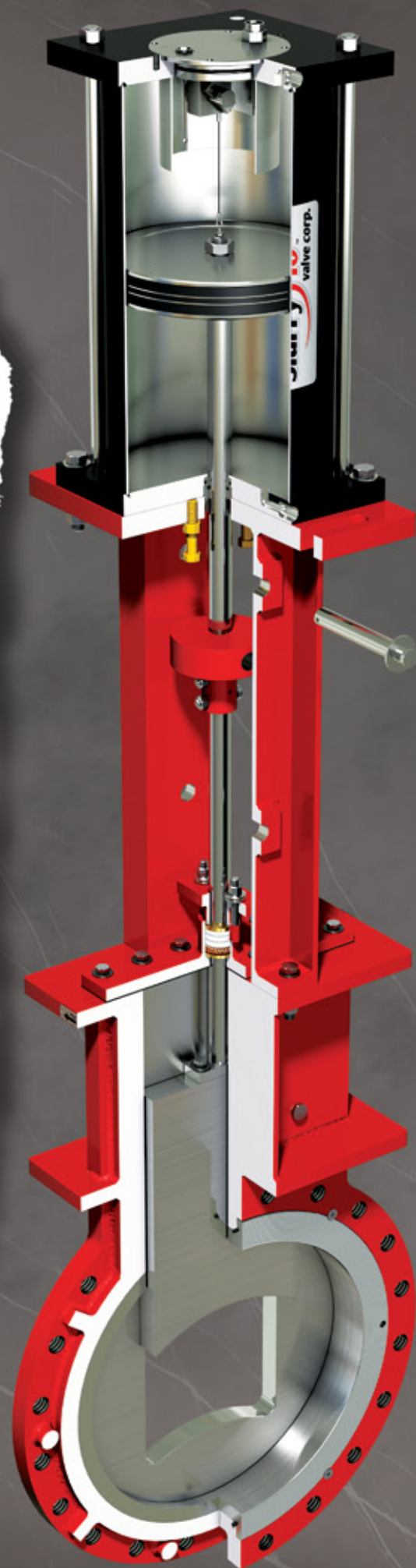
SlurryFlo control valves provide exceptional performance and reliability. The patented gate profile and unique orifice designs are engineered for controlling any application – from water to extremely abrasive slurries. By directing flow through the center of the valve, SlurryFlo protects the valve's body and downstream piping from erosion and cavitation, providing unparalleled service life.

Centered Flow



You're in Control

SlurryFlo's unique seat plate designs provide exceptional control while directing flow through the center of the pipe. In applications where valves must handle large pressure drops, cavitation reducing plates can be provided – multiple holes divide the flow into smaller energy streams, reducing noise and vibration. A few of our seat plate configurations are shown below; however the design possibilities are infinite.

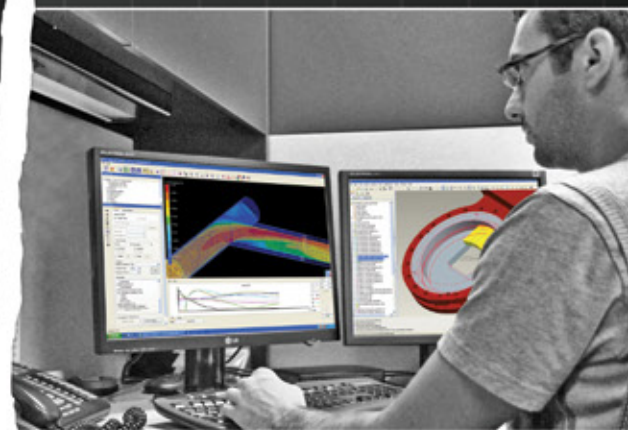


The SlurryFlo Advantage

- Patented trim design
- Flow is directed through center of valve
- Zero damage to valve body (100% protection)
- Reduced wear to downstream piping
- Unique orifice designs meet exact application requirements
- Super hard materials increase service life
- Field replaceable wear components
- Reduced downtime and maintenance costs
- Longest service life of any control valve

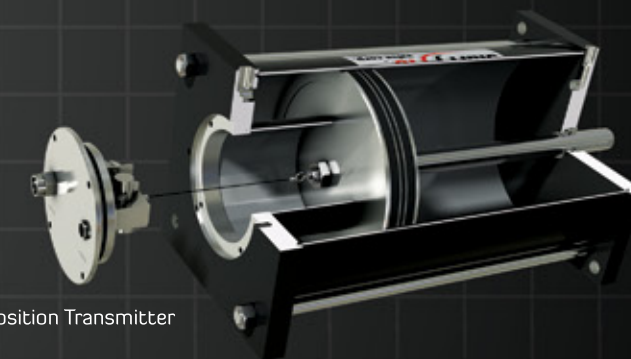


All wear components are field replaceable



Custom Engineering

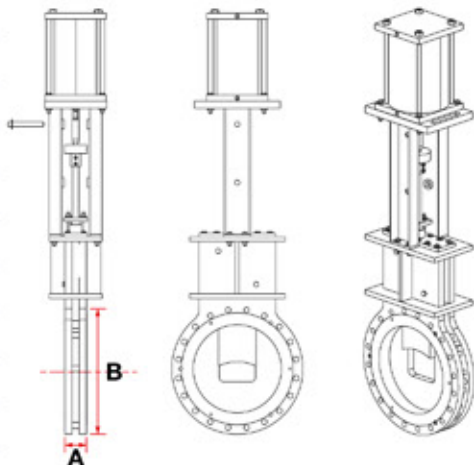
SlurryFlo engineers use state-of-the-art design and flow modeling software to build and test each valve in a virtual world. They create unique control characteristics and select materials for optimal abrasion resistance. The result is a customized control valve that meets your exact application requirements.



For ultimate control, linear actuators can be ordered with internal position transmitters. These units replace external positioner linkage arms and are protected from process media, the elements and other hazards.

Typical Industries

	Oil Sands Mining		Water/Waste Water Treatment
	Hard Rock, Potash & Coal Mining		Power Generation
	Smelting & Processing		Pulp & Paper

Valve Size	A		B		C	D		E		F		G		Dimensions (in.)	
	MSS-SP81	MSS-SP135		ANSI 150/ 150 CWP	ANSI 300		ANSI 150/ 150 CWP	ANSI 300	ANSI 150/ 150 CWP	ANSI 300	ANSI 150/ 150 CWP	ANSI 300	ANSI 150/ 150 CWP	ANSI 300	
	150 CWP	ANSI 150	ANSI 300												
3	2	2	4	7 1/2	8 1/4	3	6	6 3/8	3/8	3/4	2-1/2	2-7/8	4	8	A Face to Face (inches)
4	2	2	4 1/2	9	10	4	7 1/2	7 7/8	3/8	3/4	2-1/2	2-1	8	8	B Flange diameter
6	2 3/4	2 1/2	4 1/2	11	12 1/2	6	9 1/2	10 3/8	3/4	3/4	2-1/2	4-1 1/8	8	12	C Valve ID (based on schedule 40 unlined pipe)
8	2 3/4	2 7/8	4 3/4	13 1/2	15	8	11 3/4	13	3/4	7/8	2-3/4	4-1 1/4	8	12	D Flange bolt circle
10	2 3/4	3 1/8	5 3/8	16	17 1/2	10	14 1/4	15 1/4	7/8	1	4-3/4	4-1 1/4	12	16	E Size of tapped holes
12	3	3 1/4	5 1/2	19	20 1/2	12	17	17 3/4	7/8	1 1/8	4-3/4	6-1 1/2	12	16	F Quantity and depth of blind tapped holes per flange
14	3	3 3/8	6 1/4	21	23	13 1/4	18 3/4	20 1/4	1	1 1/8	4-3/4	6-1 3/4	12	20	G Number of bolt holes per flange
16	3 1/2	3 3/4	6 3/8	23 1/2	25 1/2	15 1/4	21 1/4	22 1/2	1	1 1/4	4-7/8	6-1 3/4	16	20	Note: Gate width is based on flow conditions
18	3 1/2	4 1/8	7	25	28	17 1/4	22 3/4	24 3/4	1 1/8	1 1/4	4-7/8	8-1 1/8	16	24	
20	4 1/2	4 1/2	7 7/8	27 1/2	30 1/2	19 1/4	25	27	1 1/8	1 3/4	4-1 1/4	8-2	20	24	
24	4 1/2	5	8 1/2	32	36	23 1/4	29 1/2	32	1 1/4	1 1/2	4-1 1/4	8-2 1/4	20	24	
28	4 1/2	7 1/8	10	36 1/2	40 3/4	27 1/4	34	37	1 1/4	1 5/8	6-1 1/4	10-2 1/2	28	28	
30	4 3/4	7 3/8	10 1/2	38 3/4	43	29 1/4	36	39 1/4	1 1/4	1 3/4	6-1 1/4	10-2 3/4	28	28	
36	4 3/4	8 7/8	12	46	50	35 1/4	42 3/4	46	1 1/2	2	6-1 1/4	12-3	32	32	
42	*See note 1			53	50 3/4	41 1/4	49 1/2	47 1/2	1 1/2	1 5/8	8-2	12-3	36	32	
48	*See note 1			59 1/2	57 3/4	47 1/4	56	54	1 1/2	1 5/8	8-2 1/4	12-2 1/4	44	32	

Consult factory for sizes above 48"

*note 1: Face to face based on customer specifications

SlurryFlo valves are available in either MSS-SP81 (150 CWP), MSS-SP135 (ANSI 150/300) or to customer preferred specifications. FCI 70-2/ANSI Class I to IV shutoff is available based on seat plate selection.

SlurryFlo Valve Corp.
5304-68 Ave
Edmonton, AB, Canada
T6B 3M4

780.468.6945
www.slurryflo.com
sales@slurryflo.com

