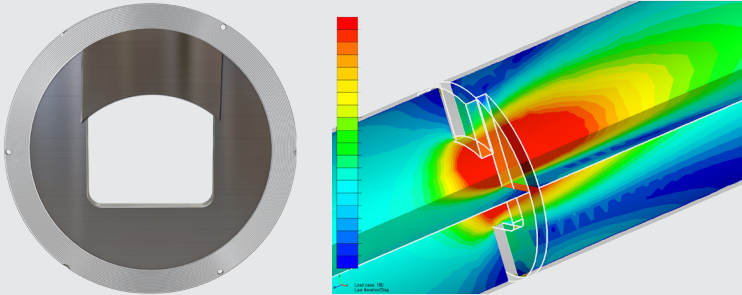
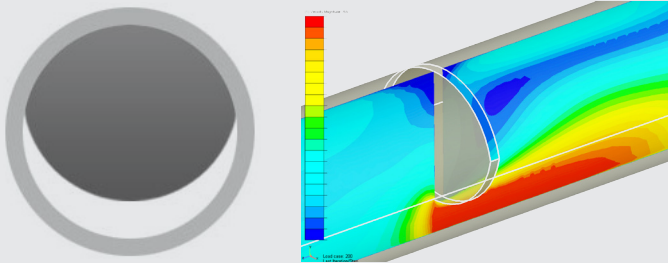


### SlurryFlo Valve



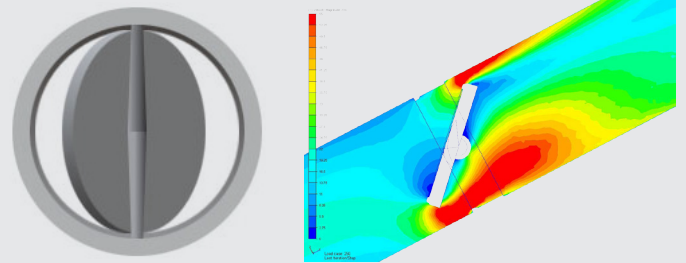
Flow is directed through the center of the valve to protect the valve's body & downstream pipe, providing a quantum leap in service life.

### Knife Gate Valve



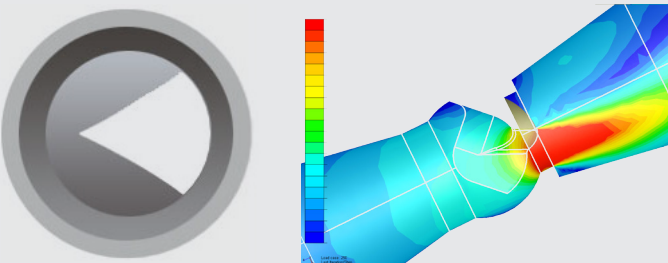
In the throttling position, conventional knife gate valves direct flow to the bottom of the body & downstream pipe, accelerating wear.

### Butterfly Valve



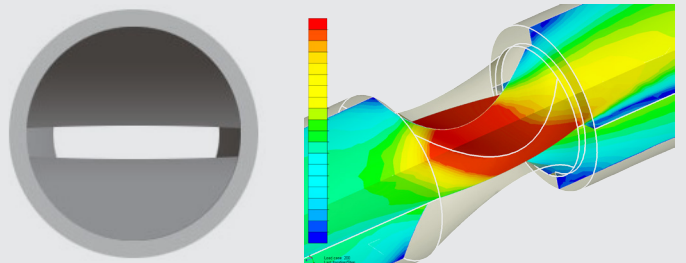
Flow is accelerated on both sides of the valve's disk and directed onto the pipe walls and valve body.

### Ball Valve



Flow is accelerated towards the valve body and downstream piping.

### Pinch Valve



Flow is accelerated inside the sleeve. This high velocity stream remains in contact with the sleeve for almost the full length of the sleeve (valve body).